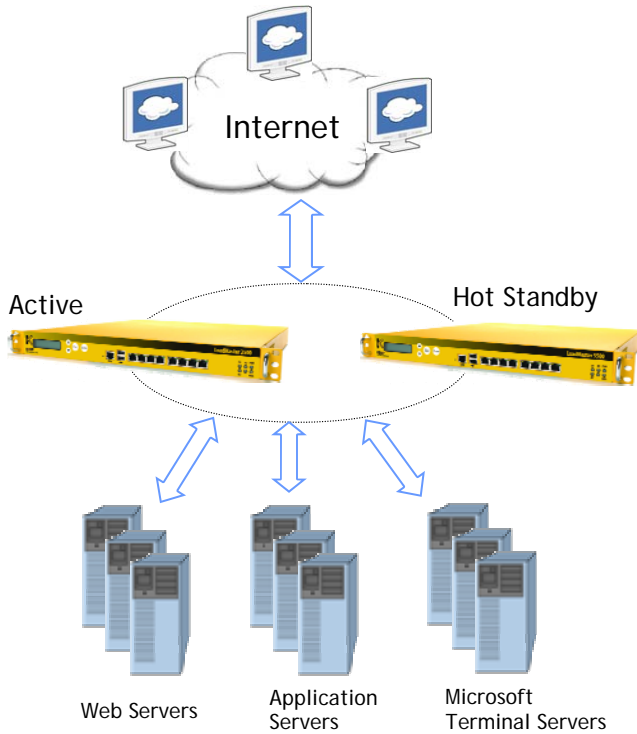


- *Application Delivery Optimization*
- *Server Load Balancing*
- *SSL Acceleration*



The LoadMaster 3500 is an advanced, 8 GbE-port server load balancing and Layer 7 content switching appliance with integrated ASIC-based SSL Acceleration. The LoadMaster intelligently and efficiently distributes Web traffic among Web servers so that your site's users get the best experience possible.

The LoadMaster 3500 is an essential component of high availability, clustering and fault tolerance, all of which provide the infrastructure for reliable Internet sites and large corporate intranets.

Combining the latest advancements in Layer 4 and 7 server load balancing technology with high-performance hardware platform, the LoadMaster 3500 is a value leader in purpose built Internet Traffic Management appliances.

**Up to 256 Virtual and 1000 Real Servers Per LoadMaster**



Feature	Benefit
High Performance L4/7 Server Load Balancing	Ensures each user gets the best application experience possible
Active/Hot-Standby, with Stateful Failover	Provides 99.999% high-availability of application servers and removes SLB as single point of failure
Server Hardware and Application Health Checking	Guarantees user requests will be directed to only "available" servers AND "available" applications.
IP and Cookie Persistence	Ensures that users maintain continuous connections with the specific server where "their" transactional data is available - even if the IP address changes during session
Layer 7 Content Switching	Enables site administrators to optimize server traffic according to content type (images, multi-media, apps)
SSL Acceleration/Offload in ASIC	Optimized server performance and user experience for encrypted application content
Compression, Cache	Reduces latency associated with internal network while further optimizing performance over existing ISP link
Intrusion Prevention Systems (IPS)	Helps thwart application-level threats, even with SSL- encrypted traffic

# LoadMaster 3500

Specifications v4.3\*



## Standard

Server Load Balancing (SLB) for TCP/UDP based protocols  
SSL Acceleration/Offload in ASIC  
Layer 7 Content Switching  
Advanced, App-Transparent Caching Engine for HTTP/HTTPS protocols  
Optimized Compression for Static and Dynamic HTTP/HTTPS Content  
Layer 7 Intrusion Prevention System (IPS), SNORT-Rule Compatible  
Up to 256 Virtual and 1000 Real Servers  
NAT-based forwarding  
Support for Direct Server Return (DSR) configurations  
Support for MS Terminal Services with Session Reconnection Built-in  
Configurable S-NAT support  
VLAN Tagging (802.1Q)

## Performance

Max Balancer L4 Throughput Up To 2.7Gbps  
Max Balancer L7 Throughput Up To 2.3Gbps  
Max Interface Throughput 8 X 949.2Mbps  
83,000 L7 (http) requests per second  
200,000 L7 concurrent connections  
4,000,000 L4 concurrent connections  
SSL Acceleration Up to 3000 TPS

## SSL

ASIC-enabled, hardware SSL Acceleration  
PCI-DSS ready SSL Implementation  
Support for up to 256 SSL Certificates  
Support for Third Party Certificates  
Automated SSL Certificate Chaining  
SSL Certificate Signing Request (CSR) Generation

## Health Checking & High Availability

ICMP health checking of server farm machines  
Layer 7 checking for DNS, FTP, HTTP, IMAP, NNTP, POP3, SMTP,  
WTS (RDP), TELNET  
Automatic reconfiguration for defective real server machines  
Active/Hot Standby configurations for High Availability  
Stateful Failover

## Administration

Fully configurable using Web User Interface (WUI)  
Secure, SSH and HTTPS (WUI) remote access for administration  
Easy start and maintenance using wizards  
WUI-based Help Assistant  
Virtual Service Configurations can be edited and tuned on-the-fly  
Real time performance and availability displays  
Graceful Administrative removal of Real Servers  
Console port for local administration  
CISCO-like Command Line Interface (CLI) Option  
Remote syslogd support  
Selective restore of LoadMaster and Virtual Service data



Support for Connection Draining  
Download software updates for LoadMaster firmware  
WUI Log Reporting with Tabbed Browser Support  
SNMP support for event traps & performance metrics  
Diagnostic shell with in-line tcpdump

## Scheduling and Balancing Methods

Round Robin  
Weighted Round Robin  
Least Connection  
Weighted Least Connection  
Agent-based Adaptive  
Chained Failover (Fixed Weighting)  
Layer 7 Content Switching

## L4/L7 Sticky (Persistence)

Connection persistency based on

- Source IP address
- SSL Session ID
- RDP Login ID for MS Terminal Services
- URL
- Host Header
- Passive Cookie
- Active Cookie (Insert)
- Cookie Hash
- Cookie Hash Source
- Query Hash

Port following for persistency options

## Security Functionality

Layer 7 Intrusion Prevention System (IPS),  
SNORT-Rule Compatible  
Black List (Access Control List system)  
IP address filtering  
Firewall filtering (everything forbidden except VS's)  
DDoS mitigation

## Hardware Platform

Intel Core-2 Duo Processor  
8 X GbE Auto-negotiating, Full Duplex Eth. Ports  
Bootable DOM (No Hard Disks)  
4 GB RAM  
Local admin via console/VGA and USB  
Dimensions: 427 x 458 x 44 mm. Weight ~ 28.66bs (13kg)  
350W ATX power supply  
Certifications: CE/FCC Class A, UL Listed, RoHS Compliant

\* Specifications are subject to change without prior notice.