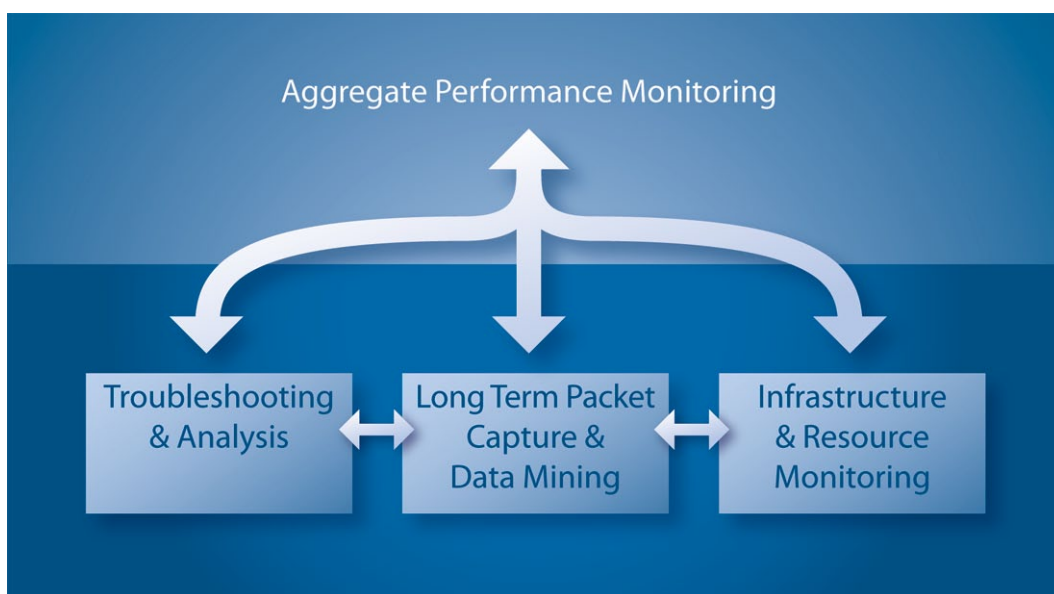


Stop Failures, Improve Performance

With network-driven applications at the heart of every company activity, network failure is not an option. Issues that disrupt or degrade application performance directly impact revenue, company productivity, and customer service.

Network Instruments® integrated solutions help benchmark, maintain, and even improve overall performance.

- Manage application delivery, response time, and performance
- Ensure successful technology and application roll-outs
- Monitor performance across virtual, physical, and cloud environments
- Identify and resolve problems before they disrupt business
- Plan and expand the network to meet long-term corporate needs
- Track unified communications and VoIP performance and quality



Achieve Global Network Visibility

- Gain enterprise-wide views of network and application performance
- Aggregate multiple points of visibility into a single dashboard view
- Quickly resolve problems by drilling into detailed metrics

Optimize Application Delivery and Performance

- Automatically discover, track, and analyze up-to-the-minute application performance
- Understand application dependencies
- Instantly identify long latency and response times
- Manage service performance from users to the cloud

Ensure Successful Technology Roll-Outs

- Conduct baseline analysis and set performance benchmarks
- Assess impact of new technology on network and applications

- Configure alarms to manage performance deviations

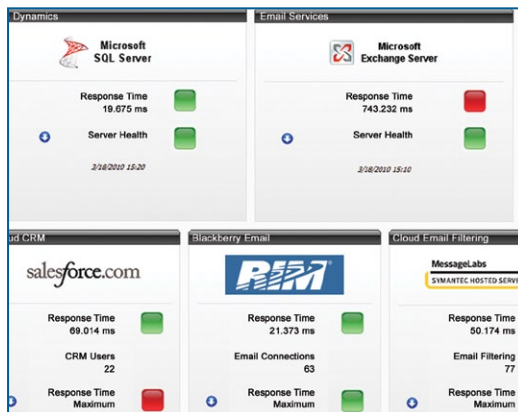
Identify and Resolve Performance Problems

- Eliminate business disruptions
- Stop wasting time replicating problems
- Immediately isolate the problem source
- Speed troubleshooting through comprehensive expert analysis

Plan Long-Term Network Growth

- Assess long-term application and network performance
- Trend bandwidth use over time
- Determine and justify need for new infrastructure investments

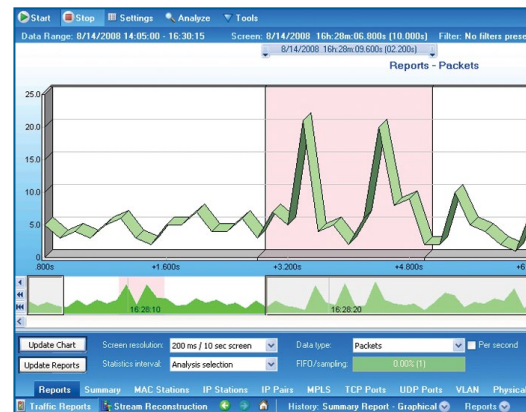
Manage performance with enterprise-wide monitoring and reporting. Resolve challenges by seamlessly drilling to the problem source using powerful expert analysis. Both capabilities are key to ensuring application delivery and reducing Mean Time To Resolution (MTTR).



Observer Reporting Server

Enterprise-wide performance management

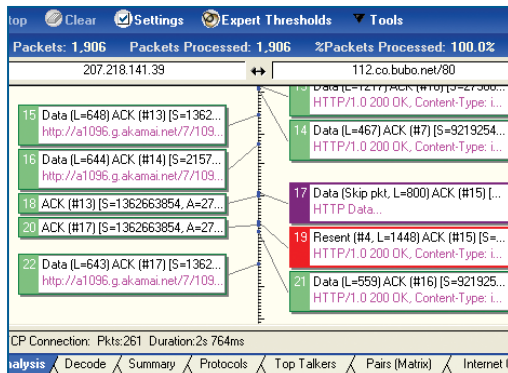
- Assess application service availability at a glance
- Track cloud service performance and verify SLAs
- Navigate quickly from high-level dashboards to the root cause
- Resolve problems with investigation workflows and expert analysis



GigaStor™

Reduce MTTR with back-in-time analysis

- Capture, save, and replay up to 576 TB of data
- Rewind the network to troubleshoot intermittent issues
- Establish baselines for new applications
- Obtain long-term analysis of performance and growth for capacity planning
- Reconstruct data streams to review web pages, VoIP conversations, and e-mails



Observer® Console

The industry's most powerful analytics

- Utilize over 600 Experts to quickly isolate and resolve problems
- Monitor application communications, errors, and response times
- Track unified communications and VoIP performance and quality on a per-call or aggregated basis
- Gain application-specific details across the enterprise

| Type | N | S | A | ! | ? | Latest (ms) | Status | IP Applications |
|-----------------------|----|----|----|-----|----|-------------|--------|-----------------|
| VMWare Virtual Server | -- | -- | -- | -- | -- | 0.373 | ✓ | 1 |
| VMWare Virtual Server | -- | -- | -- | -- | -- | 35.658 | ✓ | 1 |
| IIS Server | -- | -- | -- | -- | -- | 7.998 | ✓ | 3 |
| SQL Server | -- | -- | -- | -- | -- | 8.852 | ✓ | 2 |
| SQL Server | -- | -- | -- | -- | -- | 2.377 | ✓ | 2 |
| Web Server | -- | -- | -- | -- | -- | NA | ! | 2 |
| Station | -- | -- | -- | -- | -- | NA | ! | 2 |
| Web Server | -- | -- | -- | -- | -- | 0.974 | ✓ | 3 |
| Printer | ? | ? | -- | -- | -- | 6 | NA | 3 |
| Printer | ✓ | ✓ | -- | 14 | -- | 2 | 0.565 | ✓ |
| Printer | ✓ | ✓ | -- | 11 | -- | 5 | 0.513 | ✓ |
| Web Server | -- | -- | -- | -- | -- | NA | ! | 1 |
| Station | -- | -- | -- | -- | -- | 0.219 | ✓ | -- |
| Station | -- | -- | -- | -- | -- | NA | ! | -- |
| Switch | ✓ | ✓ | -- | 108 | -- | 2 | 0.264 | ✓ |

Observer Infrastructure

Active resource monitoring across the network

- Easily assess impact of infrastructure performance on overall enterprise
- Actively discover, map, and monitor network devices and topologies
- Utilize SNMP, WMI, WSD, IP SLA, WAAS, and NBAR to obtain network-wide views of device and application performance
- Improve problem solving by isolating issue to application, network, or device

